

# Flute Fingering Chart

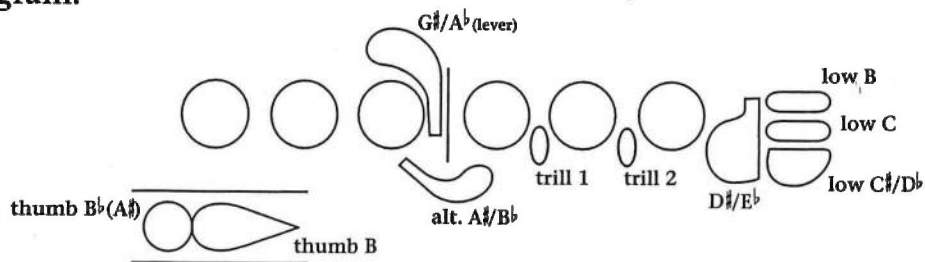
Low B foot joint only.

B	C	C# D $\flat$	D	D# E $\flat$	E	
F	F# G $\flat$	G	G# A $\flat$	A	A# B $\flat$	
B	C	C# D $\flat$	D	D# E $\flat$	E	F
F# G $\flat$	G	G# A $\flat$	A	A# B $\flat$	B	C
C# D $\flat$	D	D# E $\flat$	E	F	F# G $\flat$	G
G# A $\flat$	A	A# B $\flat$	B	C	C# D $\flat$	D

(When more than one fingering is shown, the first is the most common.)

# Flute Key Diagram & Trill Exercises

## Key Diagram:

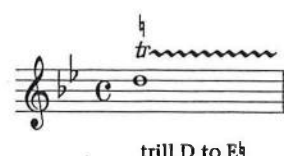
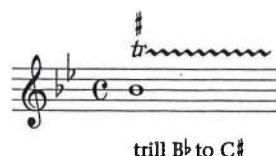
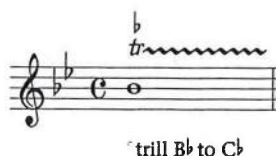
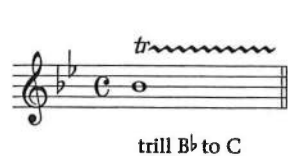


This graphic can be used as a reference for the fingering and trill charts.

Trills are a form of musical ornamentation which involves a rapid, slurred, alternation between a main note and the note above.

Unless otherwise indicated, the trill should be played taking the key signature in consideration. Sharp (#), flat (b), or natural (natural sign) signs that appear above a trill notation indicate a departure from the key signature of the piece.

## Examples of trill notation:



Practice trills by taking the indicated notes and creating an exercise that progresses from slow to fast measured rhythmic values - finally let the trill finger(s) alternate freely. Using a metronome will greatly enhance this drill technique.



the indicated notes are B<sup>b</sup> to C

## Measured Trill Exercise:



(allow finger(s) to alternate freely)

# Flute Trill Fingering Chart

C to D	C# to D	D to Eb	D to E	D# to E	Eb to F

E to F	E to F#	F to Gb	F to G	F# to G	F# to G#

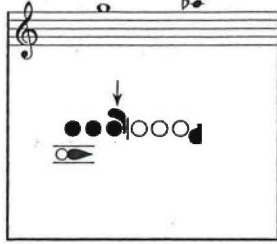
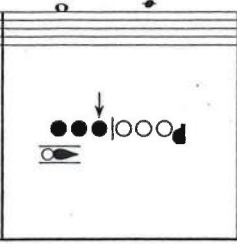
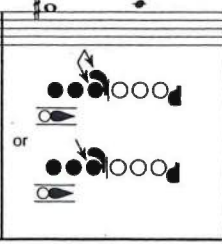
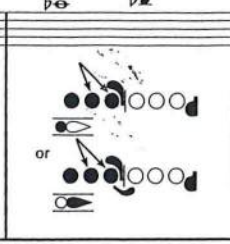
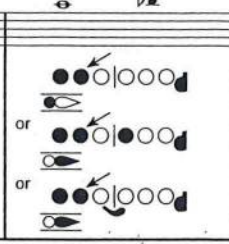
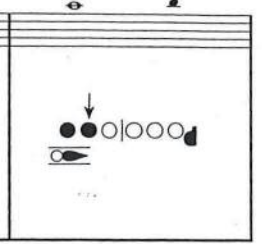
G to Ab	G to A	G# to A	Ab to Bb	A to Bb	A to B

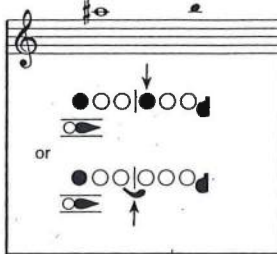
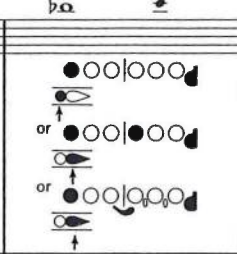
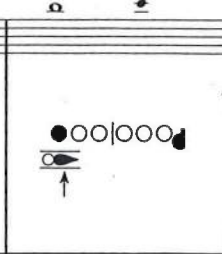
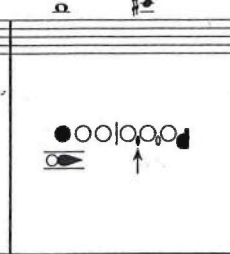
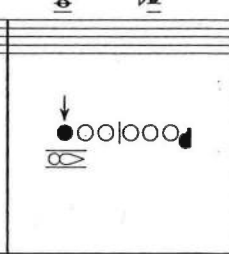
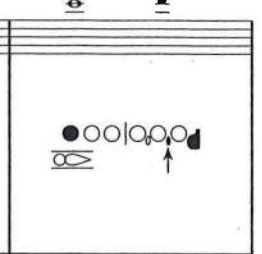
A# to B	Bb to C	B to C	B to C#	C to Db	C to D


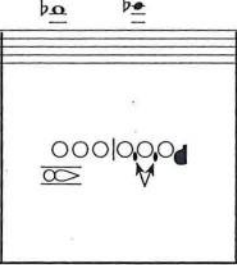
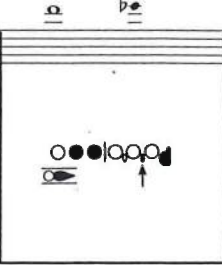
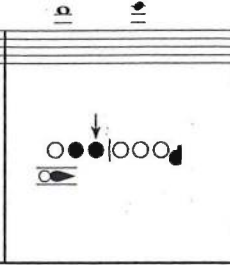
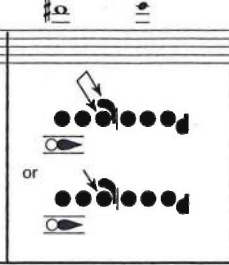
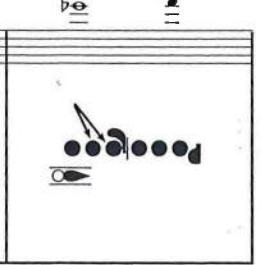
C# to D	Db to Eb	D to Eb	D to E	D# to E	Eb to F

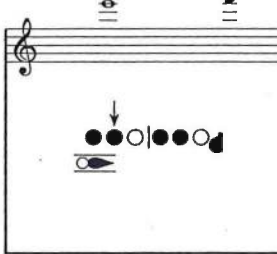
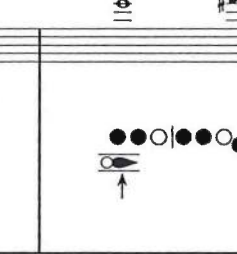
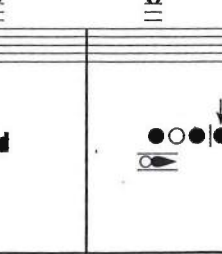
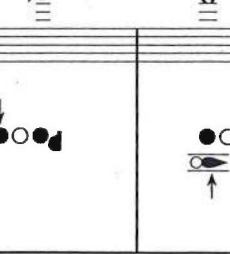
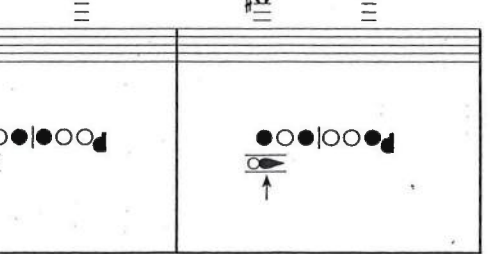
E to F	E to F#	F to Gb	F to G	F# to G	F# to G#


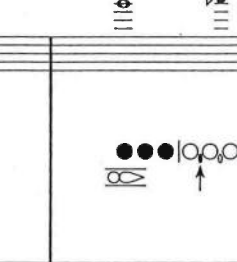
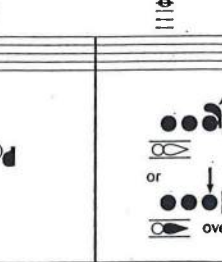
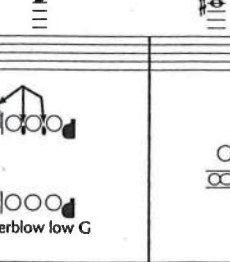
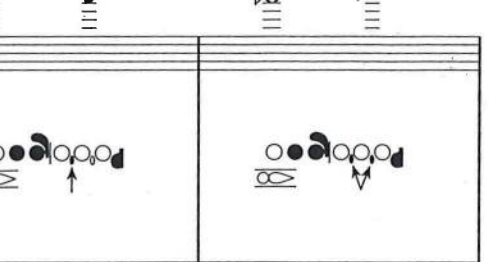


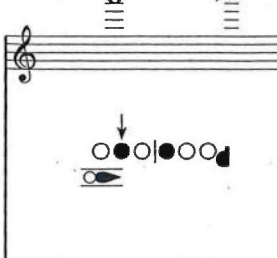
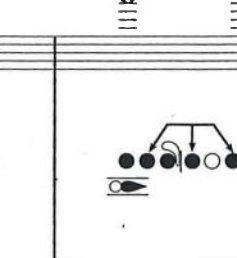
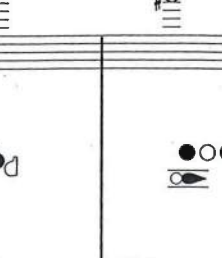
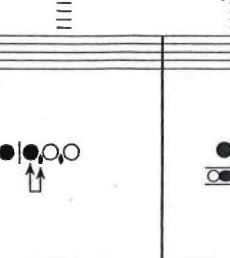
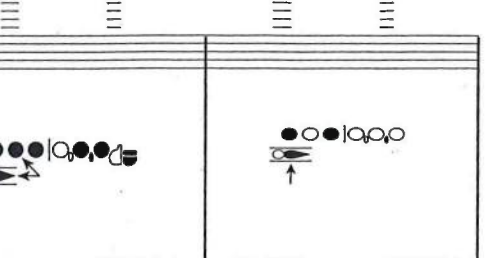
G to A $\flat$ 	G to A 	G $\sharp$ to A 	A $\flat$ to B $\flat$ 	A to B $\flat$ 	A to B 
---	--	---	---	--	--

A $\sharp$ to B 	B $\flat$ to C 	B to C 	B to C $\sharp$ 	C to D $\flat$ 	C to D 
---	---	---	---	---	---

C $\sharp$ to D 	D $\flat$ to E $\flat$ 	D to E $\flat$ 	D to E 	D $\sharp$ to E 	E $\flat$ to F 
---	---	---	--	--	---

E to F 	E to F $\sharp$ 	F to G $\flat$ 	F to G 	F $\sharp$ to G 
--	--	---	--	--

F $\sharp$ to G $\sharp$ 	G to A $\flat$ 	G to A 	G $\sharp$ to A 	A $\flat$ to B $\flat$ 
--	---	---	---	---

A to B $\flat$ 	A to B 	A $\sharp$ to B 	B $\flat$ to C 	B to C 
--	---	--	--	---